

1A Old Haymarket 73-89 Victoria Street, Liverpool, L1 6AF
Tel: 0151 305 2577
Email: liverpoolsales@ascendproperties.com
www.ascendproperties.com

Ascend

Built on higher standards



Carriage Grove, Bootle

£750 Per Month

Ascend are pleased to offer for rent this modern two bedroom apartment.

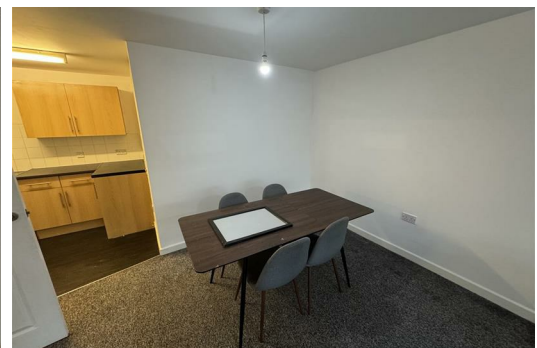
A magnificent 2 bedroom newly renovated Apartment in a wonderful location, situated in Liverpool L20, offering amazing comfortable living and convenience with simplicity.

The Apartment is presented in outstanding condition and fitted with all the basic facilities like: Close to public transport, Communal Garden, Double glazing, Fitted Kitchen, Fully furnished to high spec, Intercom entry system.

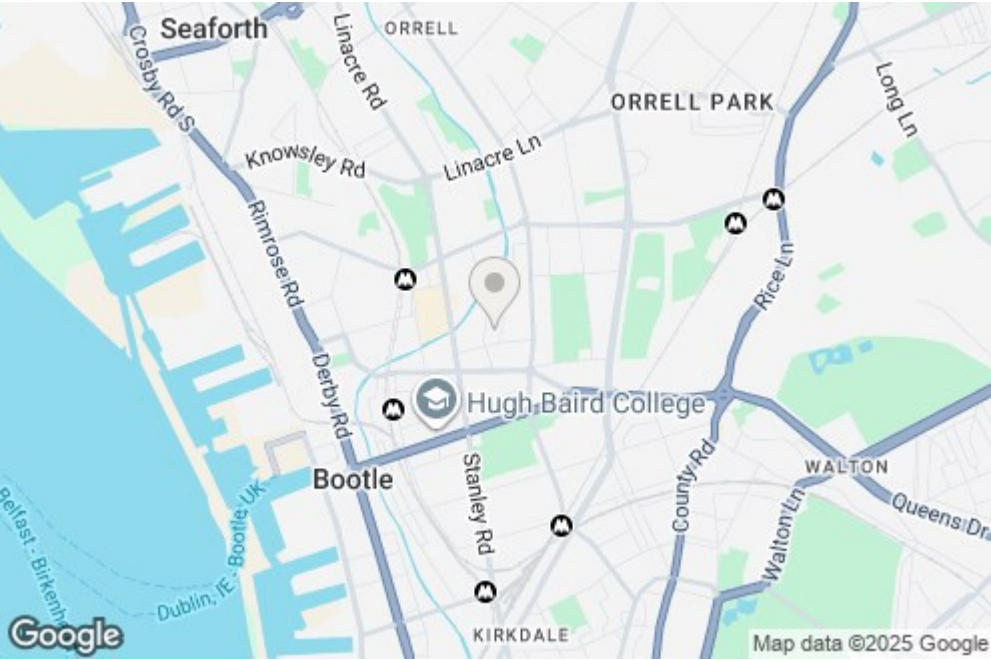
Bills are not included in rental price.

Images are for marketing purposes only*

Deposit: £960
Available 22nd September 2025
12 months
FURNISHED



Wishing Well, 35B Carriage Grove, Bootle, Merseyside, L20 3JF



Energy Efficiency Rating			Environmental Impact (CO ₂) Rating		
Very energy efficient - lower running costs	Good	Poor	Very environmentally friendly - lower CO ₂ emissions	Good	Poor
92-100 A			35-45 A		
82-91 B			46-55 B		
72-81 C			56-65 C		
62-71 D			66-75 D		
52-61 E			76-85 E		
42-51 F			86-95 F		
31-41 G			96-105 G		
Not energy efficient - higher running costs			Not environmentally friendly - higher CO ₂ emissions		